

Hayman[®]
COLLECTION



CATALOGUE

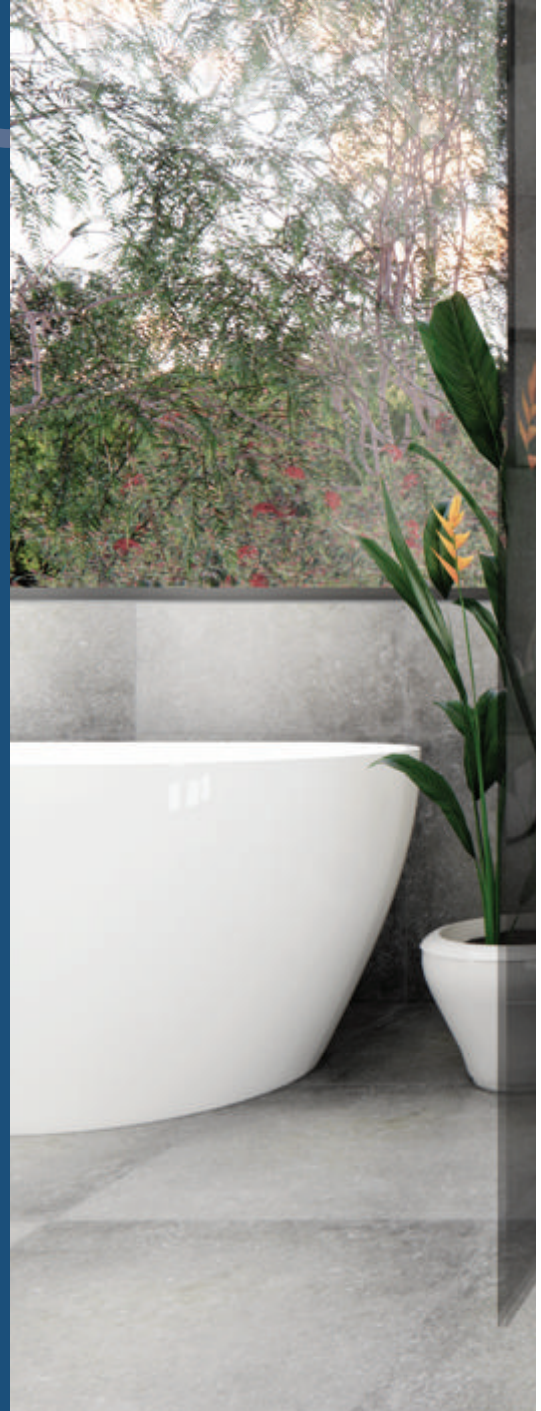
ALUMINIUM LINEAR DRAINS

THE HAYMAN STORY

Since 2013, Hayman Collection has delivered premium drain solutions to the Australasian market that are functional, elegant and stand at the forefront of contemporary bathroom design.

Hayman linear drains are available across Australia and New Zealand, offering innovative drainage solutions for a variety of wet area applications.

Our versatility and desire to manufacture the highest quality products sets the Hayman Collection apart as the industry standard for linear drains in Australia and New Zealand.





Brushed Black Tile-In Drain



Brushed Gold Light Tile-In Drain

TRUSTED

WHY HAYMAN?

Hayman Collection is backed by Australia's favourite tiling tool and profiles provider, DTA Australia. DTA has been servicing retail, commercial and industrial markets since 1976, making it one of Australia's most trusted and dependable brands.

Our matching bathroom profiles are designed to complement much of our aluminium drain range, allowing for harmony of function and design in all manner of bathroom projects.

We offer a range of support products to ensure the success of your next bathroom or wet area renovation.



DRAIN APPLICATIONS



BATHROOMS



BALCONIES

The Hayman Collection is designed to add luxurious and understated elegance to bathrooms, poolsides, driveways and balconies. Find your ideal style and colour among our designer range, giving your bathroom or wet area a fusion of contemporary function and aesthetic sophistication.

SOPHISTICATION



POOLSIDE



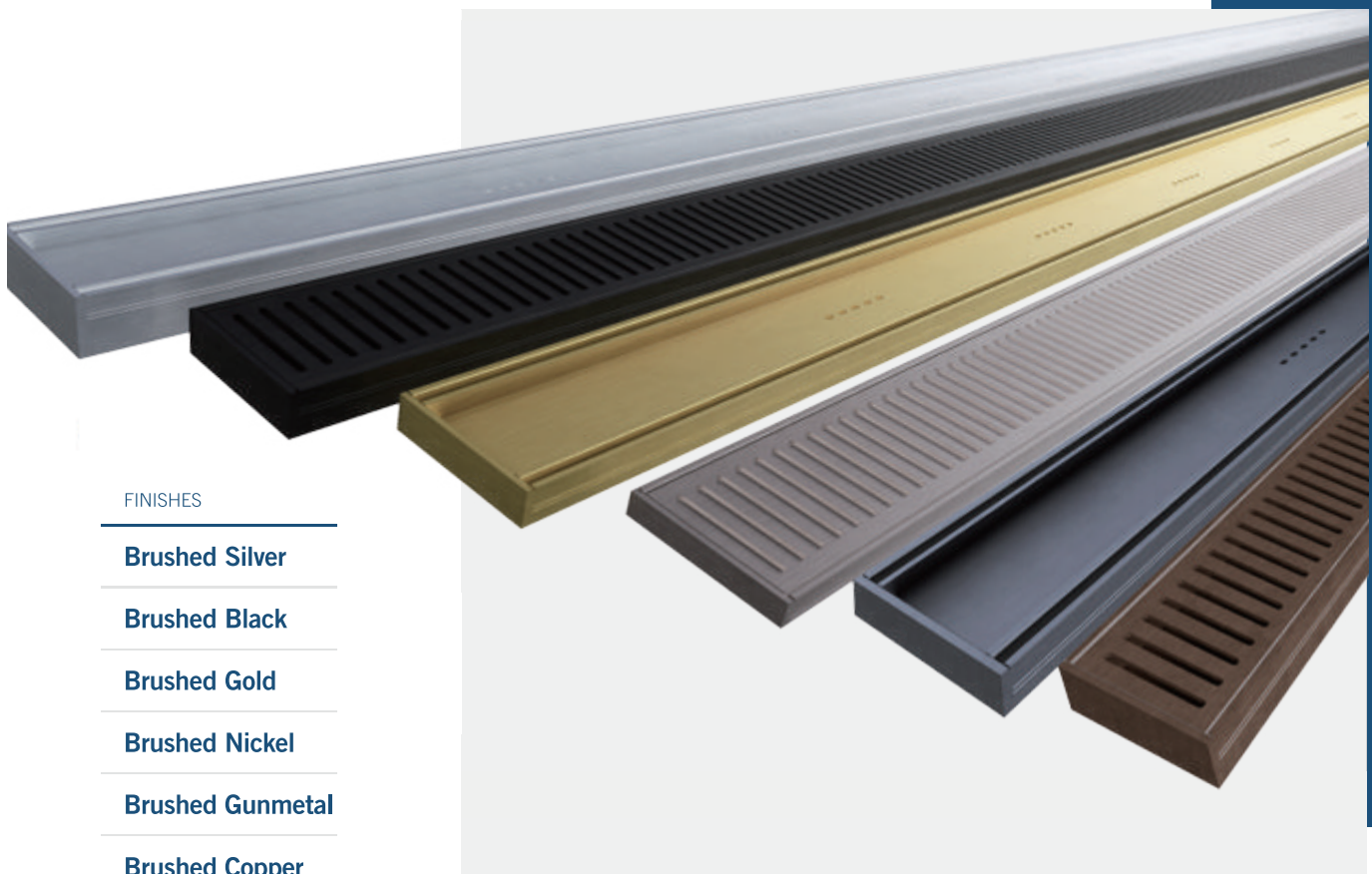
DRIVEWAYS

TIMELESS

ENDURING CONFIDENCE

The Hayman Collection of aluminium drains exemplifies the ultimate partnership of engineering innovation and contemporary design.

Choose from six exquisite finishes, coated in rustproof anodised aluminium. We are so confident in our range, we have given all our drains a lifetime warranty. So you can enjoy the timeless look, year after year.



FINISHES

Brushed Silver

Brushed Black

Brushed Gold

Brushed Nickel

Brushed Gunmetal

Brushed Copper



LIFETIME WARRANTY

Backed by our innovative rustproof anodised aluminium coating. Giving assurance you have made the right choice with Hayman.



CUSTOM SPECS

Hayman drains have various depth options to suit your specific tile or paver dimensions. They can be cut to size. Use our multipurpose joinery for drains over 3m in length.



UV GUARD

High performance finishes provide year-round UV protection. The Hayman black, nickel and silver drains are safeguarded against fading and corrosion for both indoors and outdoors.



WaterMark
WMTS-040
WM-025820

An Australia-wide certification based on the National Construction Code, ensuring that drainage and plumbing systems work as intended and are fit for purpose.



GRATE DRAINS

Brushed Copper Grate Drain

GRATE DRAINS	OPTIONS
Colours	Silver / Nickel / Black / Gold Light* / Copper * / Gunmetal*
Depth (mm)	14 / 26 / 35
Width (mm)	100
Length	3 metres
Finish	Brushed Aluminium
Applications	Indoor / Outdoor^

* Gold light, copper and gunmetal not available in 35mm

^ Gold light, copper and gunmetal suitable for indoor use only

GRATE LINEAR ALUMINIUM DRAINS

14mm Depth | 100mm Width | 3m Lengths



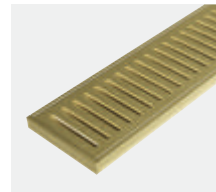
Brushed Silver FLASD3.14BFS



Brushed Nickel FLASD3.14BFN



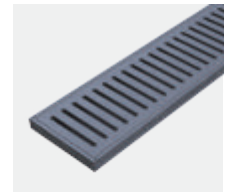
Brushed Black FLASD3.14BFBK



Brushed Gold Light FLASD3.14BFGL



Brushed Copper FLASD3.14BFC



Brushed Gunmetal FLASD3.14BFGM

26mm Depth | 100mm Width | 3m Lengths



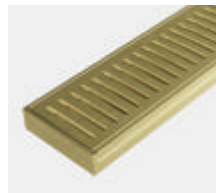
Brushed Silver FLASD3.26BFS



Brushed Nickel FLASD3.26BFN



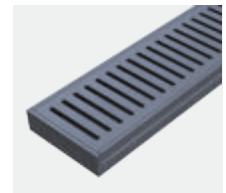
Brushed Black FLASD3.26BFBK



Brushed Gold Light FLASD3.26BFGL

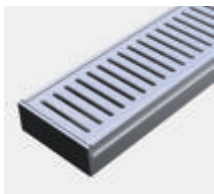


Brushed Copper FLASD3.26BFC



Brushed Gunmetal FLASD3.26BFGM

35mm Depth | 100mm Width | 3m Lengths



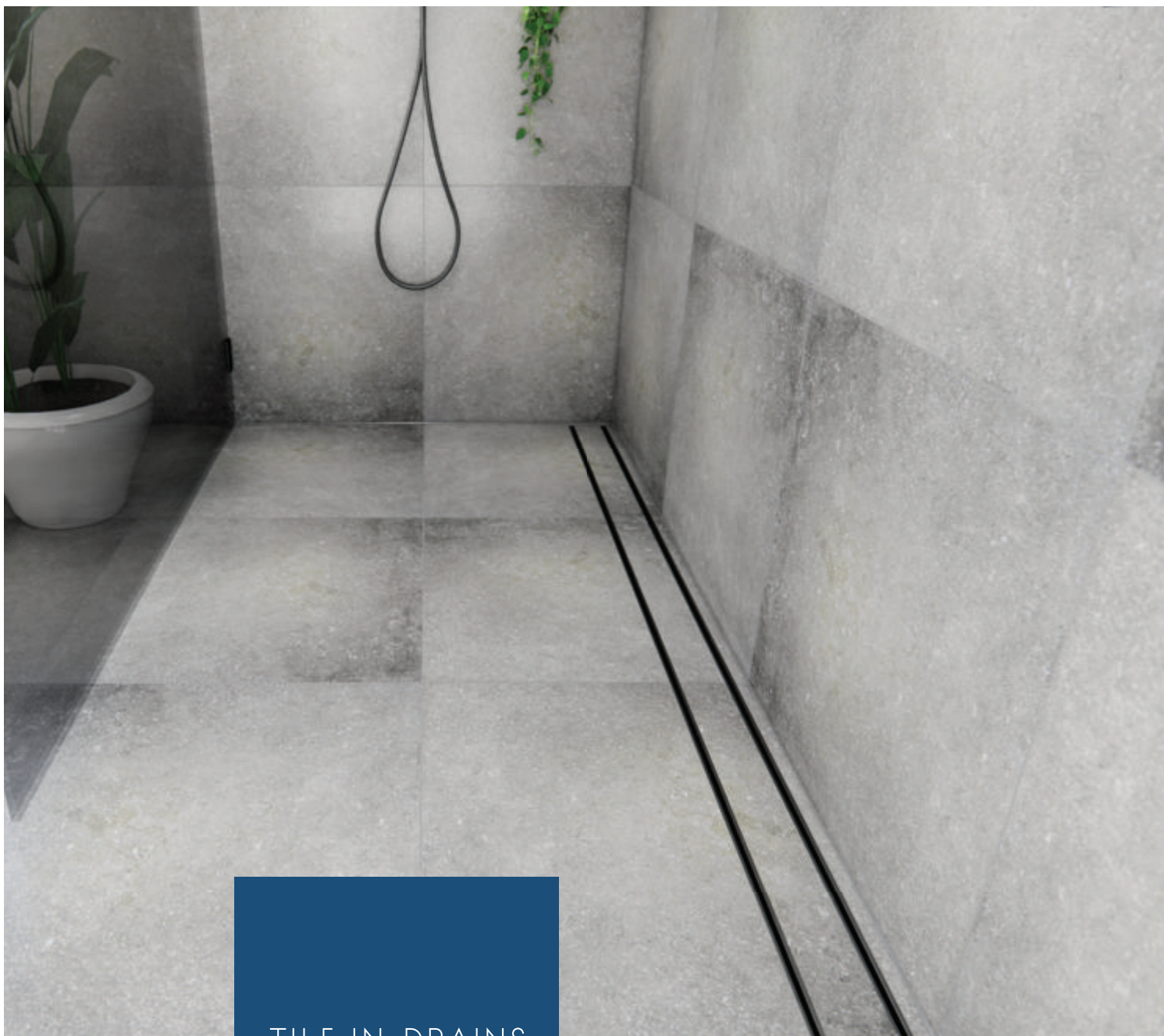
Brushed Silver FLASD3.35BFS



Brushed Nickel FLASD3.35BFN



Brushed Black FLASD3.35BFBK



TILE-IN DRAINS

Brushed Black Tile-In Drain

TILE-IN DRAINS	OPTIONS
Colours	Silver / Nickel / Black / Gold Light* / Copper* / Gunmetal*
Depth (mm)	21 / 26 / 35
Width (mm)	100
Length	3 metres
Finish	Brushed Aluminium
Applications	Indoor / Outdoor^

* Gold light, copper and gunmetal not available in 35mm

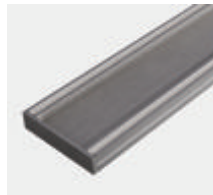
^ Gold light, copper and gunmetal suitable for indoor use only

TILE-IN LINEAR ALUMINIUM DRAINS

21mm Depth | 100mm Width | 3m Lengths



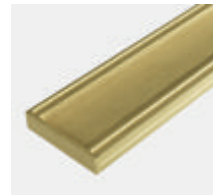
Brushed Silver FLAT13.21BFS



Brushed Nickel FLAT13.21BFN



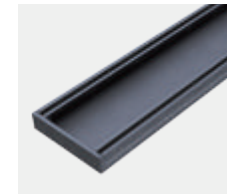
Brushed Black FLAT13.21BFBK



Brushed Gold Light FLAT13.21BFGL

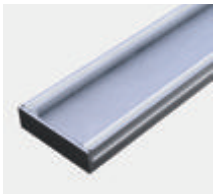


Brushed Copper FLAT13.21BFC

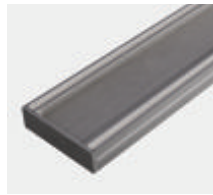


Brushed Gunmetal FLAT13.21BFGM

26mm Depth | 100mm Width | 3m Lengths



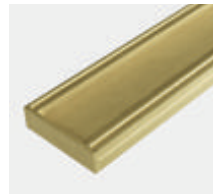
Brushed Silver FLAT13.26BFS



Brushed Nickel FLAT13.26BFN



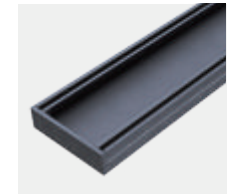
Brushed Black FLAT13.26BFBK



Brushed Gold Light FLAT13.26BFGL

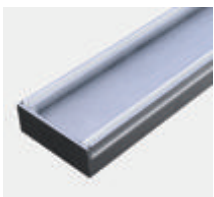


Brushed Copper FLAT13.26BFC

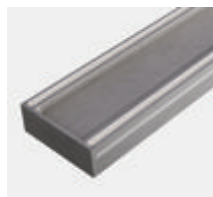


Brushed Gunmetal FLAT13.26BFGM

35mm Depth | 100mm Width | 3m Lengths



Brushed Silver FLAT13.35BFS



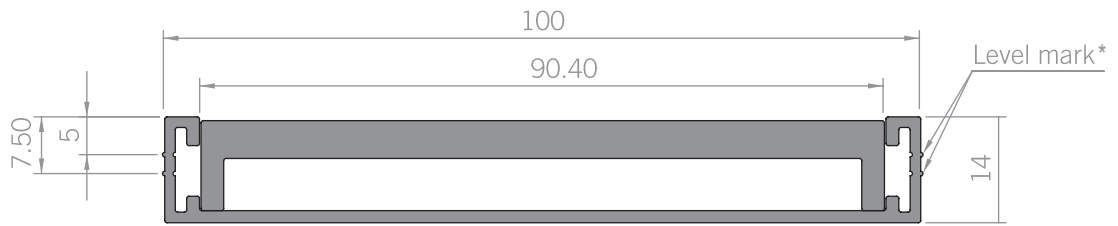
Brushed Nickel FLAT13.35BFN



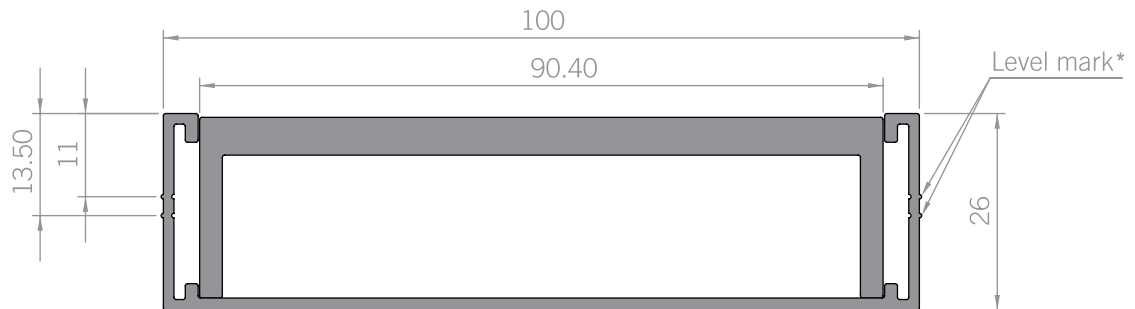
Brushed Black FLAT13.35BFBK

GRATE DRAIN PROFILES

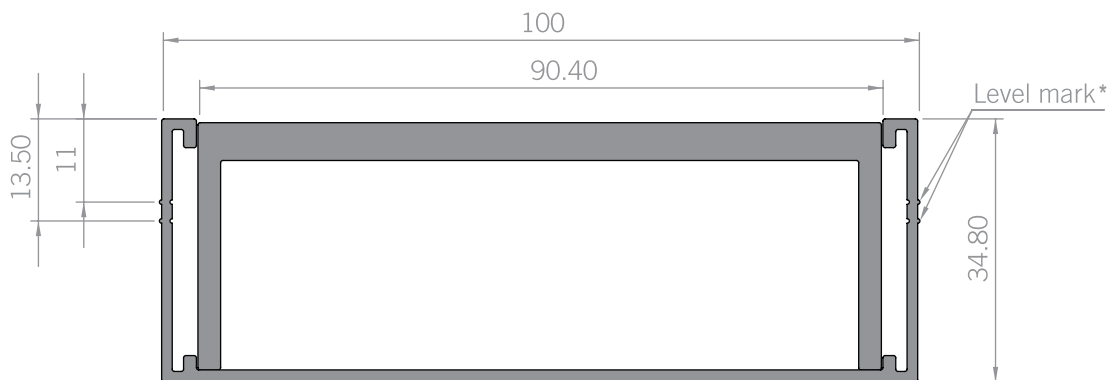
14mm



26mm



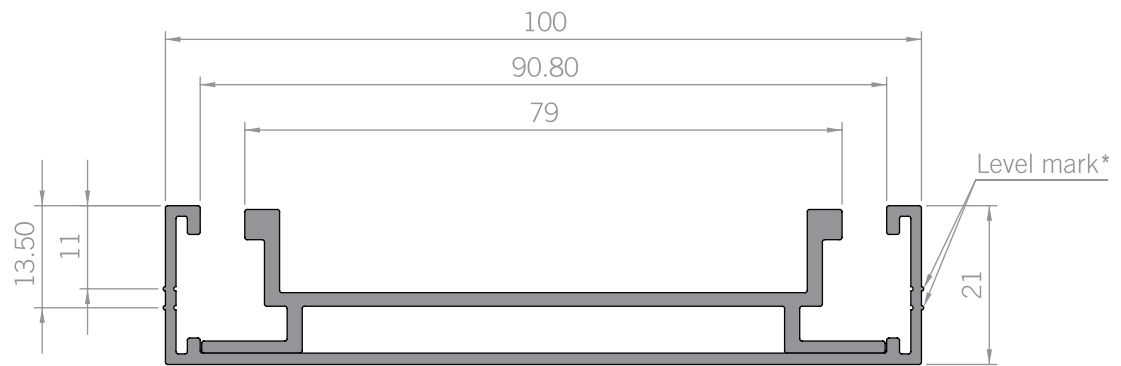
35mm



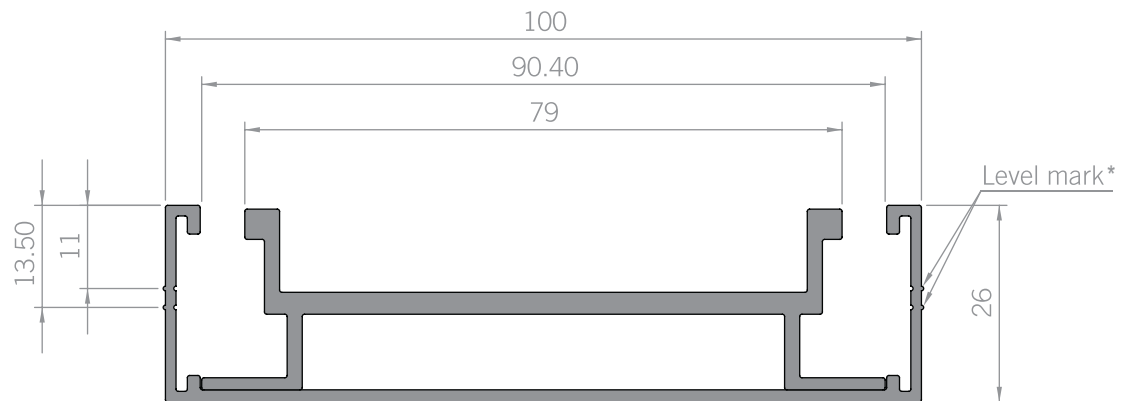
*Screed Level Markings to assist with screed installation

TILE-IN DRAIN PROFILES

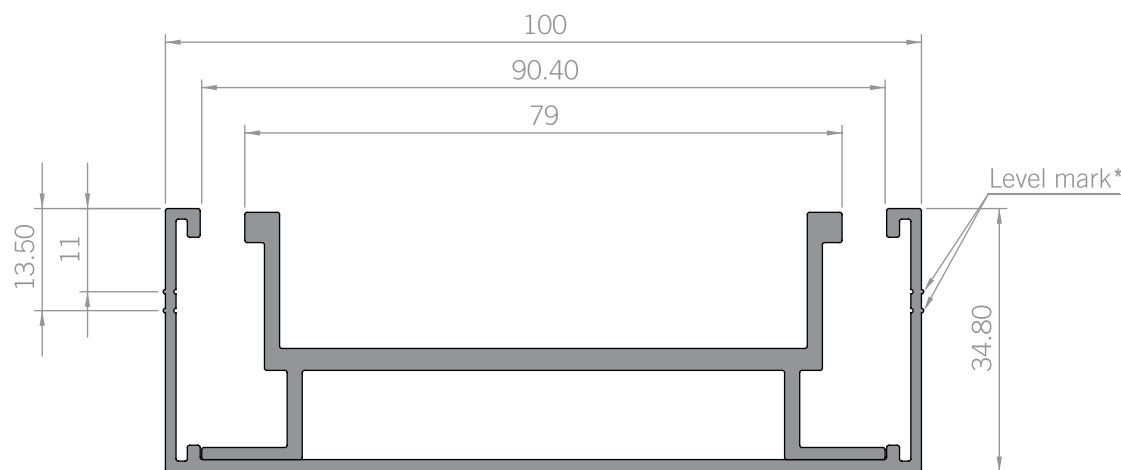
21mm



26mm



35mm



*Screed Level Markings to assist with screed installation

Scale 1:1

INSTALLATION PRODUCTS

The engineering and design of the Hayman linear drain system allows for easy specification, selection and installation.

END CAPS

The Hayman drain End Caps beautifully finish each end of the linear drain. Self-secure engineering - no fastening required.

END CAPS	OPTIONS
Colours	Silver / Nickel / Black / Gold Light* / Copper* / Gunmetal*
Depth (mm)	14 / 21 / 26 / 35
Width (mm)	4.6
Finish	Brushed Aluminium
Applications	Indoor / Outdoor^

* Gold light, copper and gunmetal not available in 35mm

^ Gold light, copper and gunmetal suitable for indoor use only

90 DEGREE JOINERS

Need a corner solution? Use our 90 Degree Joiners to secure drain sections in corners.

90 DEGREE JOINERS	OPTIONS
Colours	Silver / Black / Gold*
Width (mm)	14 / 21 / 26 / 35
Finish	Aluminium
Applications	Indoor / Outdoor^

* Gold not available in 35mm

^ Gold suitable for indoor use only

JOINERS

For linear drains over 3m long, use our Joiners to secure multiple sections.

JOINERS	OPTIONS
Colours	Silver / Black / Gold*
Width (mm)	14 / 21 / 26 / 35
Finish	Aluminium
Applications	Indoor / Outdoor^

* Gold not available in 35mm

^ Gold suitable for indoor use only

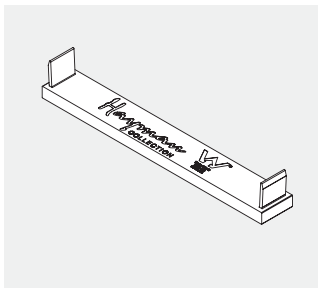
OUTLETS

A selection of popular-sized outlets to connect plumbing pipework.

OUTLETS	OPTIONS
Colours	Silver / Black / Gold*
Depth (mm)	52
Width (mm)	40 / 45 / 72 / 76 / 80
Finish	Aluminium
Applications	Indoor / Outdoor^

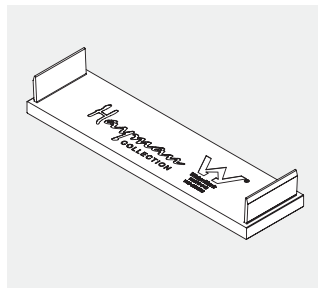
^ Gold suitable for indoor use only

END CAPS (2pc) 14mm



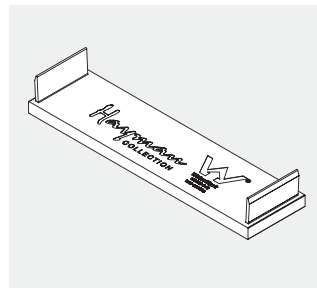
Silver FLAEC14BFS
Nickel FLAEC14BFN
Black FLAEC14BFBK
Gold Light FLAEC14BFGL
Copper FLAEC14BFC
Gunmetal FLAEC14BFGM

21mm



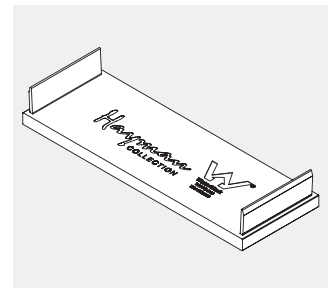
Silver FLAEC21BFS
Nickel FLAEC21BFN
Black FLAEC21BFBK
Gold Light FLAEC21BFGL
Copper FLAEC21BFC
Gunmetal FLAEC21BFGM

26mm



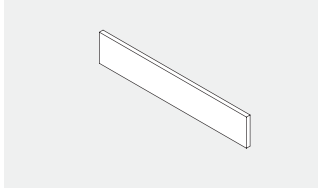
Silver FLAEC26BFS
Nickel FLAEC26BFN
Black FLAEC26BFBK
Gold Light FLAEC26BFGL
Copper FLAEC26BFC
Gunmetal FLAEC26BFGM

35mm



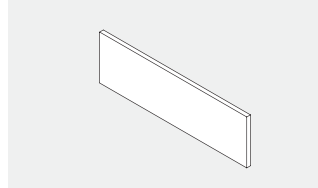
Silver FLAEC35BFS
Nickel FLAEC35BFN
Black FLAEC35BFBK

JOINERS
14mm



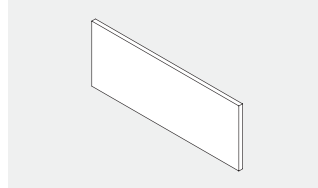
Silver FLAJ14
Black FLAJ14BK
Gold FLAJ14G

21mm



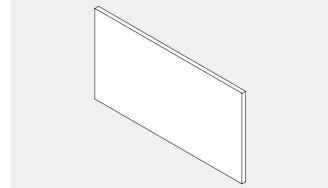
Silver FLAJ21
Black FLAJ21BK
Gold FLAJ21G

26mm



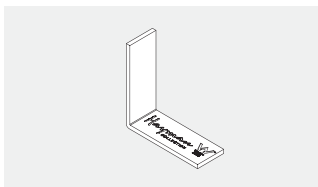
Silver FLAJ26
Black FLAJ26BK
Gold FLAJ26G

35mm



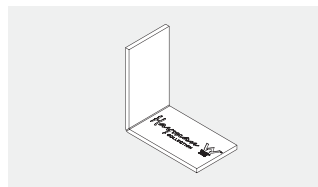
Silver FLAJ35
Black FLAJ35BK

90 DEGREE JOINERS (2pc)
14mm



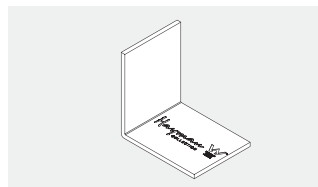
Silver FLAJ14-90
Black FLAJ14-90BK
Gold FLAJ14-90G

21mm



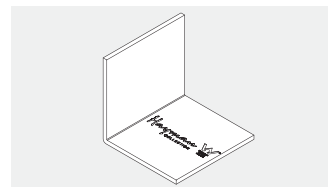
Silver FLAJ21-90
Black FLAJ21-90BK
Gold FLAJ21-90G

26mm



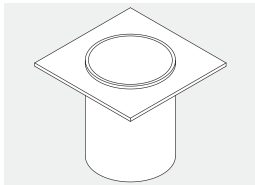
Silver FLAJ26-90
Black FLAJ26-90BK
Gold FLAJ26-90G

35mm



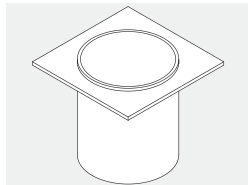
Silver FLAJ35-90
Black FLAJ35-90BK

OUTLETS
40mm



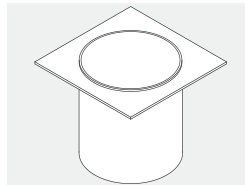
Silver FLAO-40
Black FLAO-40BK
Gold FLAO-40G

45mm



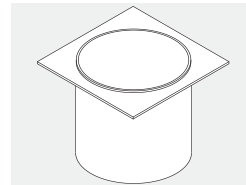
Silver FLAO-45
Black FLAO-45BK
Gold FLAO-45G

72mm



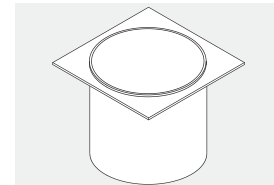
Silver FLAO-72

76mm



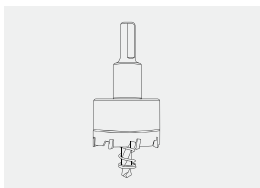
Silver FLAO-76
Black FLAO-76BK
Gold FLAO-76G

80mm



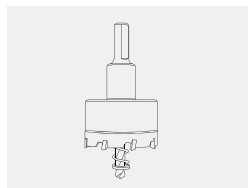
Silver FLAO-80
Black FLAO-80BK
Gold FLAO-80G

HOLESAWS
40mm



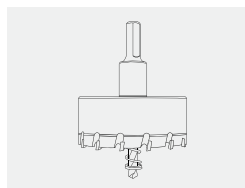
Silver FLATCT-40

45mm



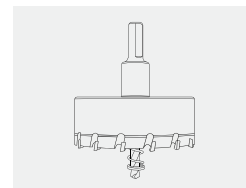
Silver FLATCT-45

72mm



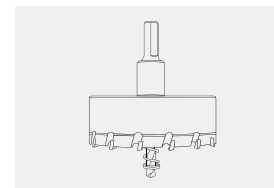
Silver FLATCT-72

76mm



Silver FLATCT-76

80mm



Silver FLATCT-80

INSTALLATION VIDEOS



View the installation instructional video and product specification sheets via the link above.

Achieve the perfect finish on your Hayman project with the inclusion of DTA profiles. Available in various designs and sizes to complement your Hayman Linear Aluminium Drains.



SEAMLESS



Brushed Silver Tile-In Drain



Distributed by DTA International Group

AUSTRALIA

DTA Australia Pty Ltd
Victoria - Head Office
6 Ashley Park Dr
Chelsea Heights, VIC, 3196
P.O. Box 318
Patterson Lakes, VIC, 3197
Email: sales@dta-aus.com.au
Phone: 1800 505 045
www.dta-aus.com.au

NEW ZEALAND

DTA New Zealand Limited
2/27 Cain Rd, Penrose
Auckland, New Zealand, 1061
Email: sales@dtanz.co.nz
Phone: +64 9 525 0321
www.dtanz.co.nz